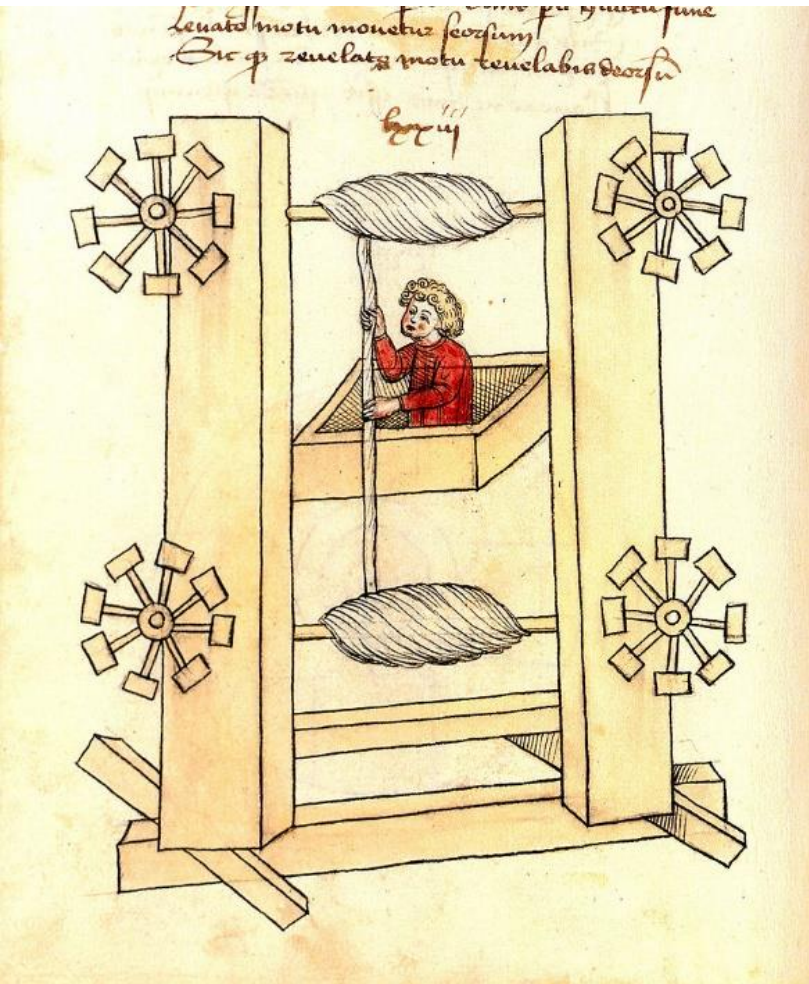


ลิฟต์ (อังกฤษ : Elevator หรือ Lift)

# ลิฟต์ (อังกฤษ : Elevator หรือ Lift)

ลิฟต์ (อังกฤษ : Elevator หรือ Lift) เป็นพาหนะเคลื่อนที่ในแนวตั้งชนิดหนึ่ง มีประสิทธิภาพในการเคลื่อนย้ายคนหรือสิ่งของระหว่างชั้นในอาคาร ลิฟต์ในปัจจุบันใช้พลังงานมอเตอร์ไฟฟ้าในการทำงาน



German engineer Konrad Kyeser (1405)

ที่มา <https://en.wikipedia.org/wiki/Elevator>



Elisha Otis , Crystal Palace, 1853

ที่มา <https://en.wikipedia.org/wiki/Elevator>



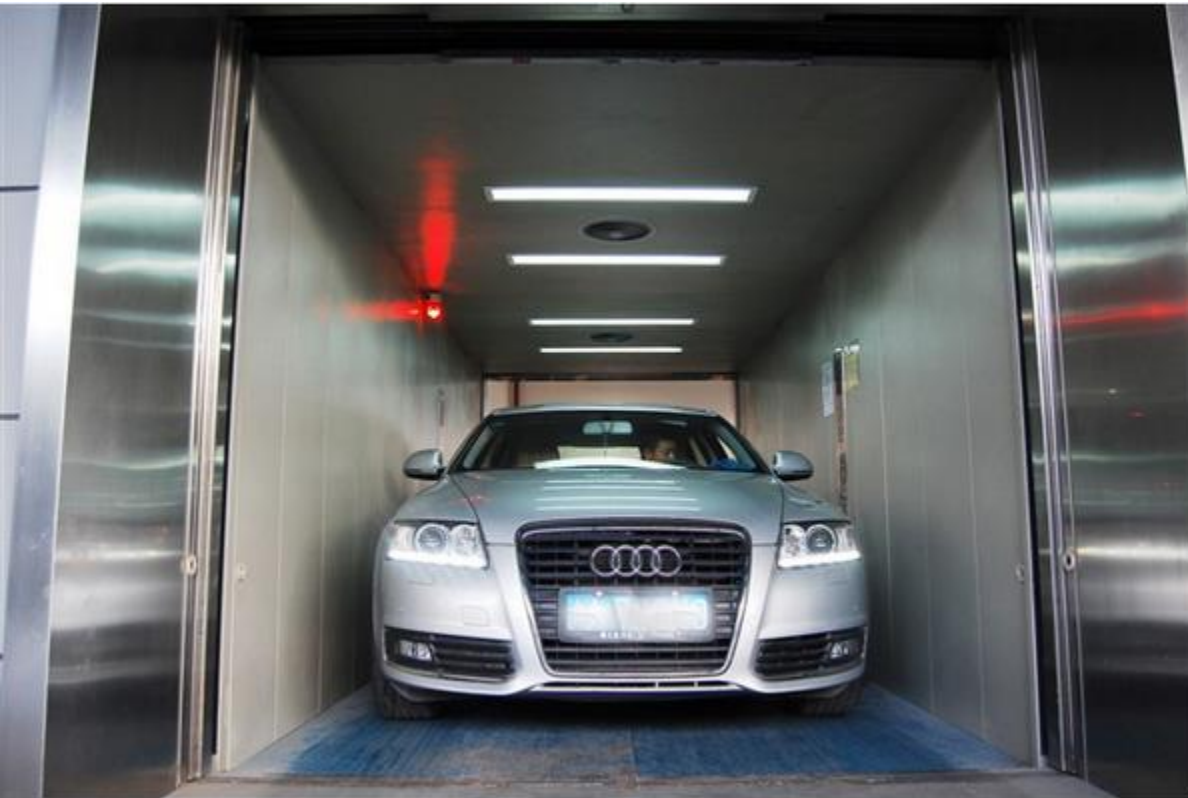
The E.V. Haughwout Building is a five-story, 79-foot (24 m)

ที่มา <https://en.wikipedia.org/wiki>

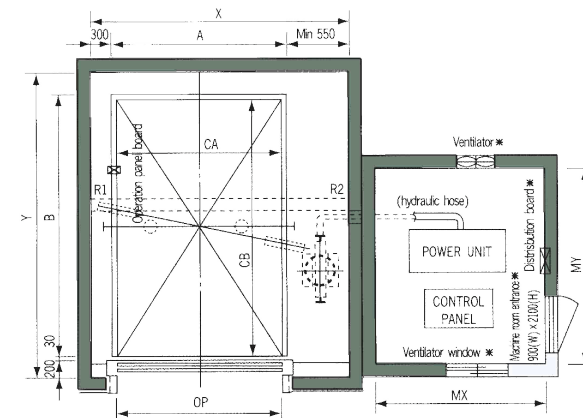
## ลิฟต์ ประเภท

1. ลิฟต์โดยสาร FUJI PASSENGER ELEVATOR
2. ลิฟต์เตียงคนไข้และผู้พิการ
3. ลิฟต์บ้าน FUJI HOME ELEVATOR
4. ลิฟต์บรรทุกทุกสินค้า FUJI FREIGHT ELEVATOR
5. ลิฟต์บรรทุกรถยนต์ FUJI AUTOMOBILE ELEVATOR
6. ลิฟต์แก้ว FUJI OBSERVATION ELEVATOR
7. ลิฟต์กระจก FUJI GLASS ELEVATOR
8. ลิฟต์กันระเบิด / ลิฟต์ป้องกันประกายไฟ
9. ลิฟต์ส่งเอกสาร-ส่งอาหาร-ส่งยา FUJI DUMBWAITER ELEVATOR
10. รอก-เครื่องคว้าน ELECTRIC HOIST (Wire Rope)



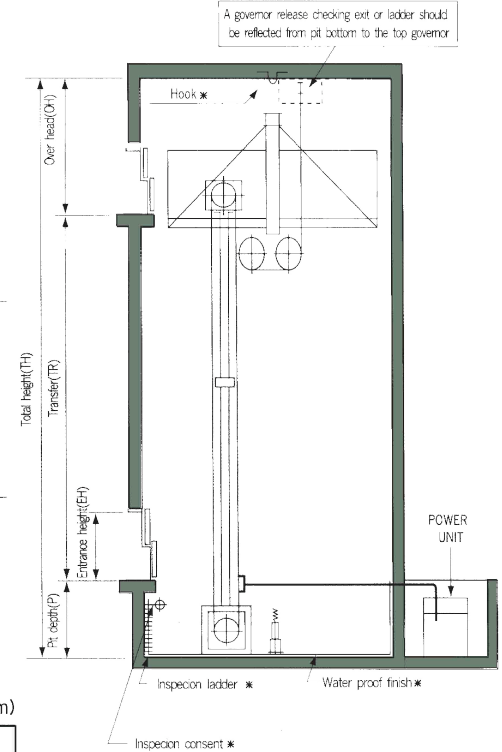


Plan of Hoistway & Machine Room



\* Works to be done by other contractors

Note; Installation of ventilation and duct system are required due to heat generation in machine room..



(unit:mm)

Speed (m/min)	Entrance height(EH)	OverHead (OH)	Pit (P)	M/C Room height(MH)	Transfer (TR)
20,30,45	1800	3600	1400	2000	20m

Note; The size above mentioned, are minimum values. Please contact us in case the travel distance is longer than 20m.

[https://www.alibaba.com/product-detail/Competitive-price-Nantong-Medical-schindler-push\\_60659198246.html](https://www.alibaba.com/product-detail/Competitive-price-Nantong-Medical-schindler-push_60659198246.html)

Standard Dimensions & Reactions

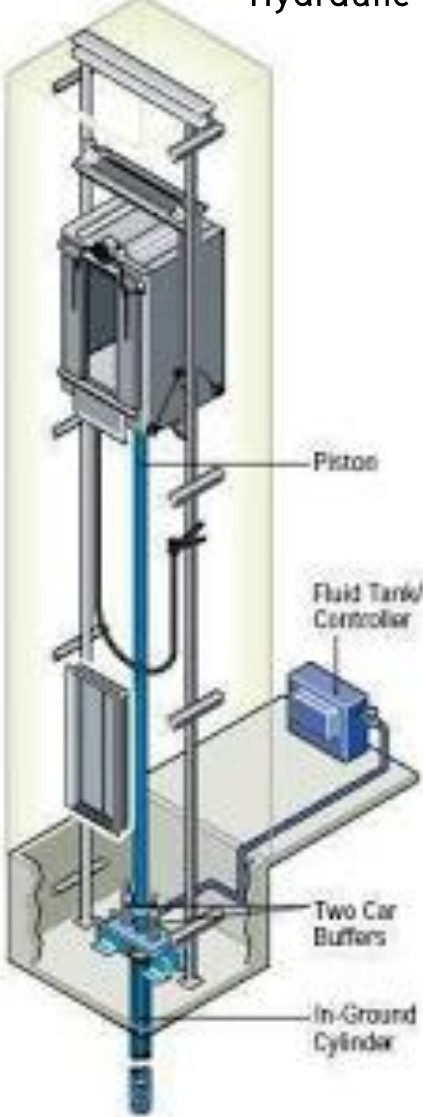
(unit:mm)

Type	Model	Speed (m/min)	Clear Opening	CAR		Hoistway	Machine Room	M/C Room /Reaction(kg)	
				Internal	External			R1	R2
				CP	CA × CB				
Standard	HA2000-2U	20,30,45	2350	2350 × 5300	2450 × 5350	3300 × 5800	2500 × 2800	5500	250
	HA2500-2U	20,30,45	2750	2750 × 6300	2900 × 6350	3750 × 6800	2500 × 2800	6400	300
Transfix	HA2000-2U	20,30,45	2350	2350 × 5300	2450 × 5300	3300 × 5800	2500 × 2800	5500	250
	HA2500-2U	20,30,45	2750	2750 × 6300	2850 × 6300	3700 × 6800	2500 × 2800	6400	300

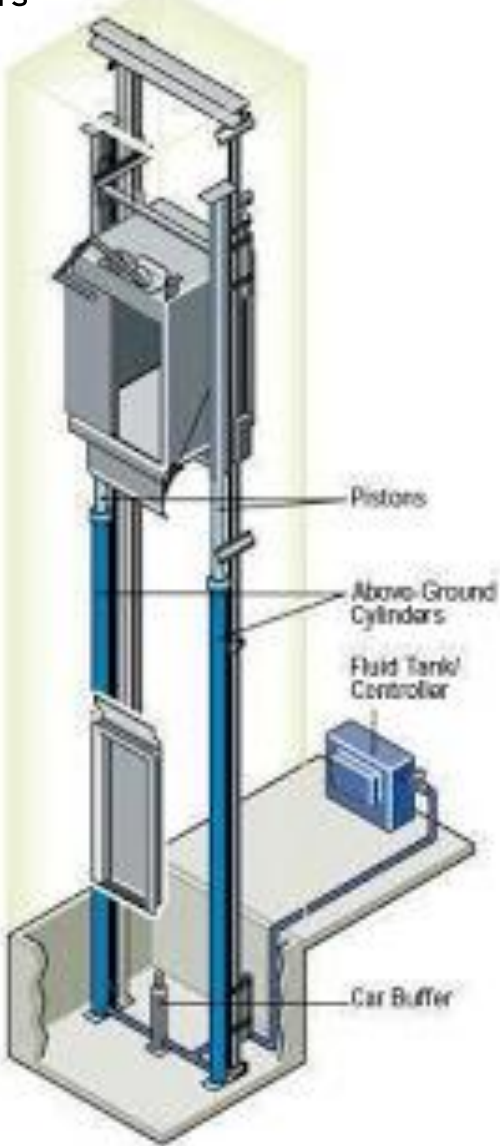
Note; The car outside size can be variable with the type of the entrance.



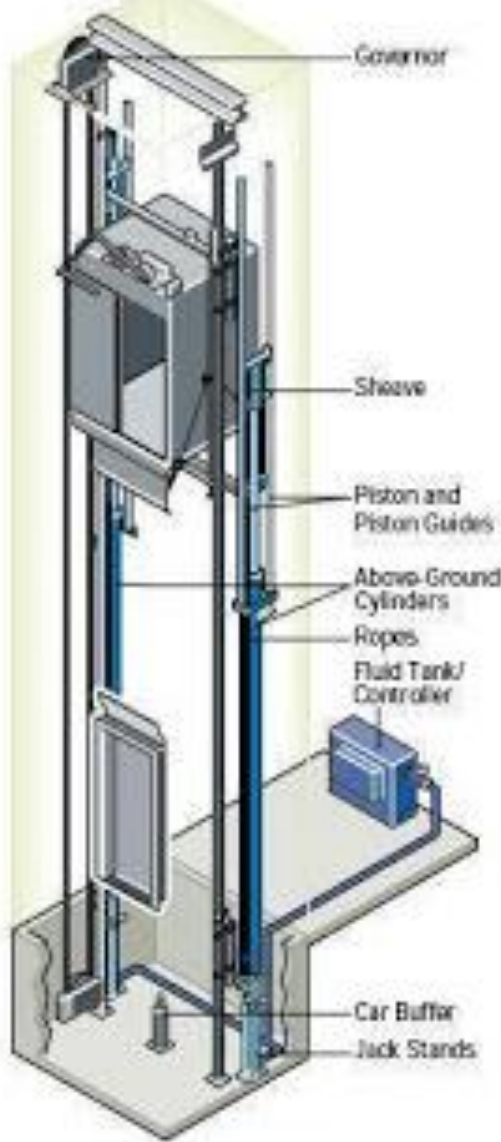
# Hydraulic Elevators



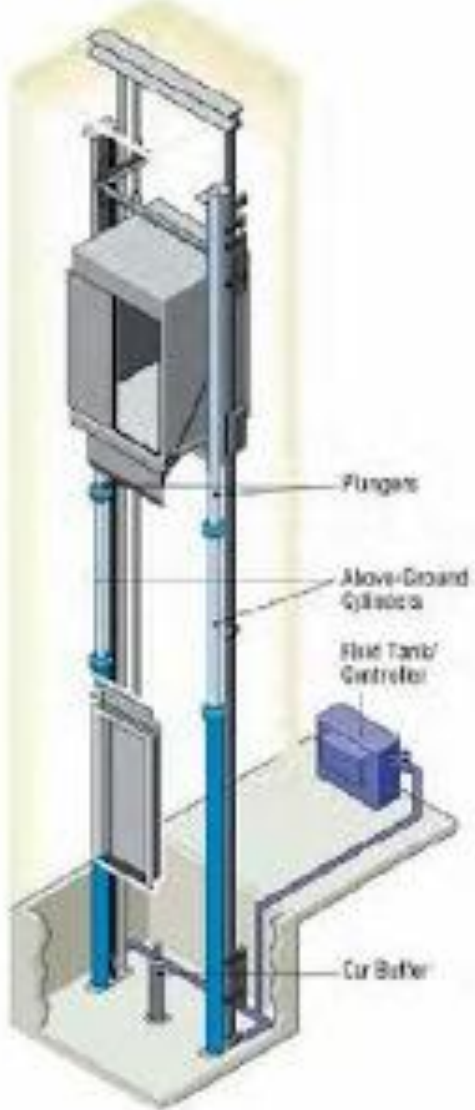
**Holed (Conventional) Hydraulic Elevators**



**Non-telescoping (single stage) Hydraulic Elevators**



**Roped Hydraulic Elevators**

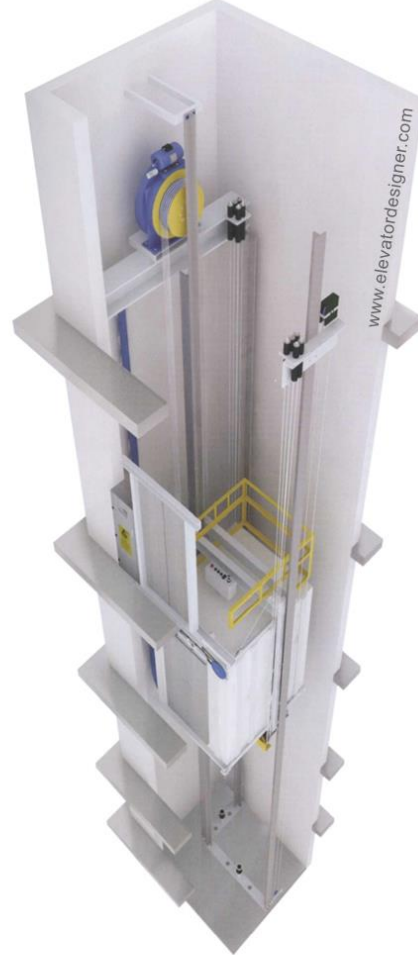
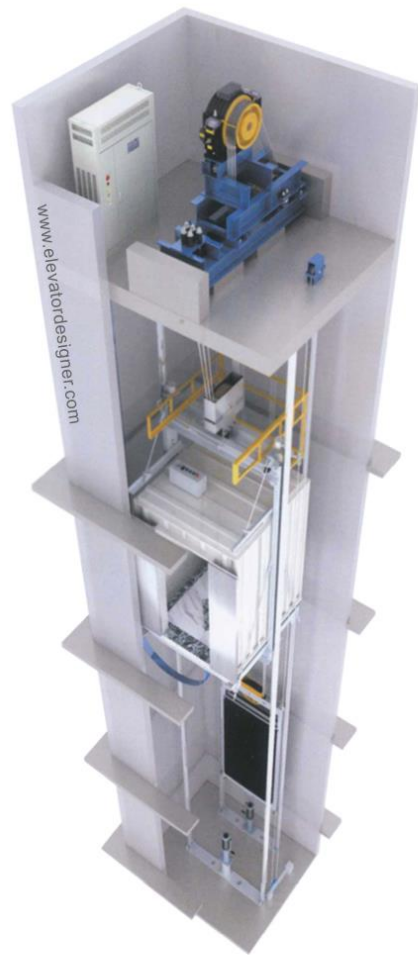


**Telescopic Hydraulic Elevators**

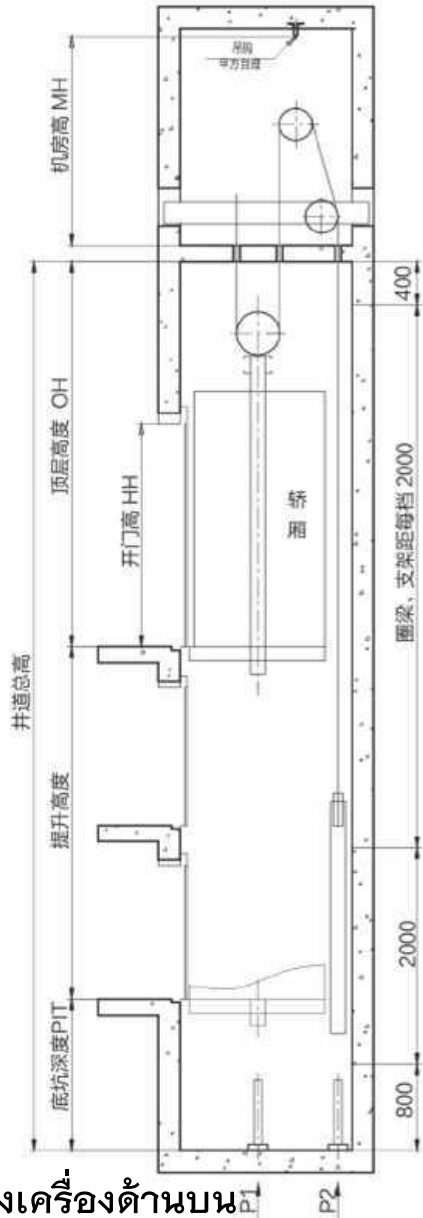
FUJI Elevator  
Small Machine Room  
(Spec Saver Type)

FUJI Elevator  
Machine Roomless  
(Spec Saver Type)

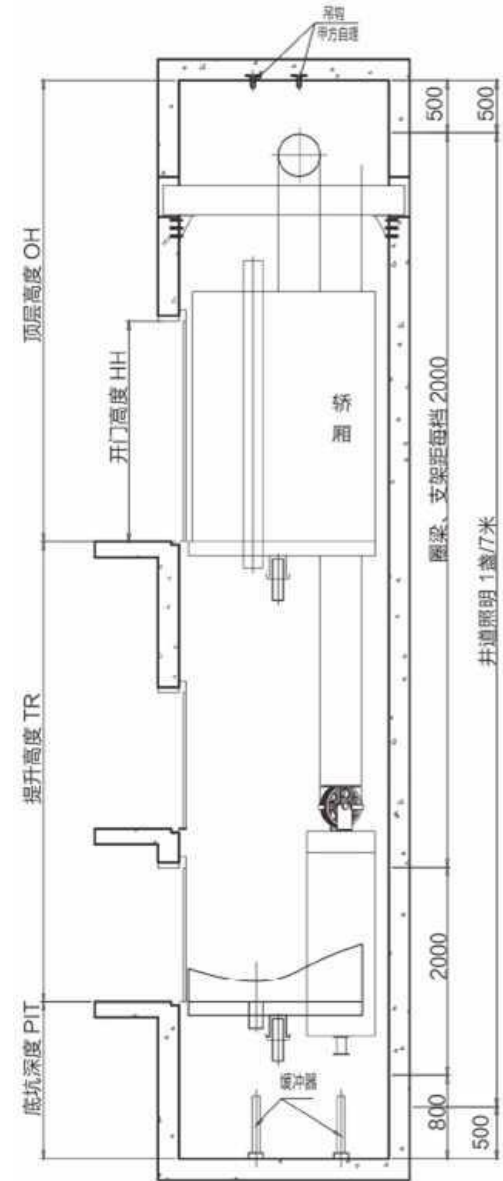
ลิฟต์ มีแบบมีห้องเครื่องด้านบน และไม่มีห้องเครื่องด้านบน



井道立面图  
Shaft Section Plan

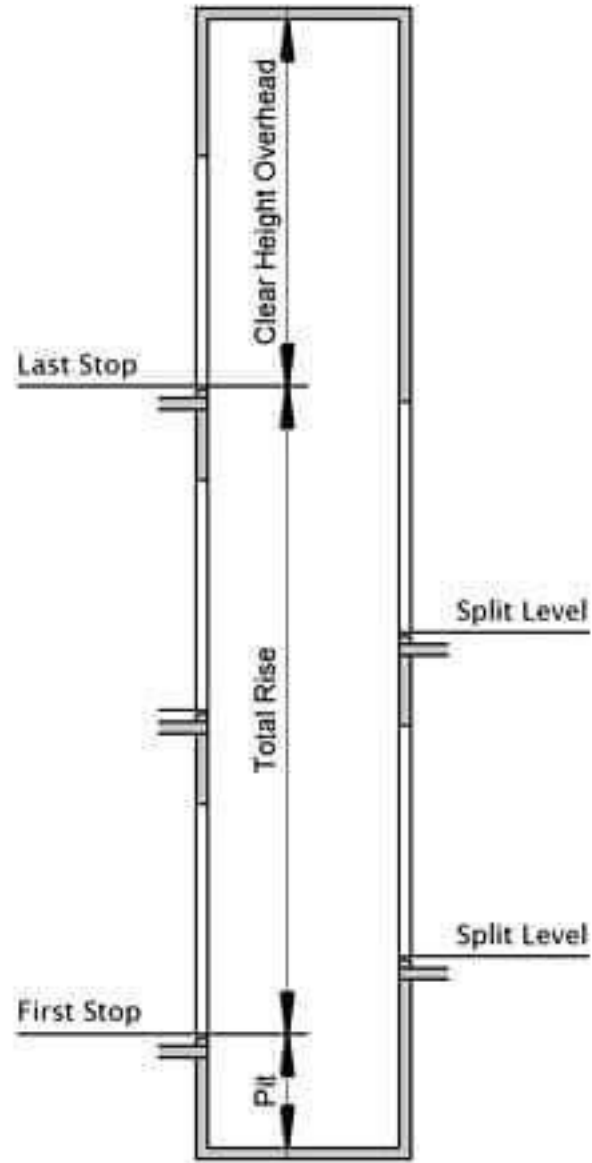
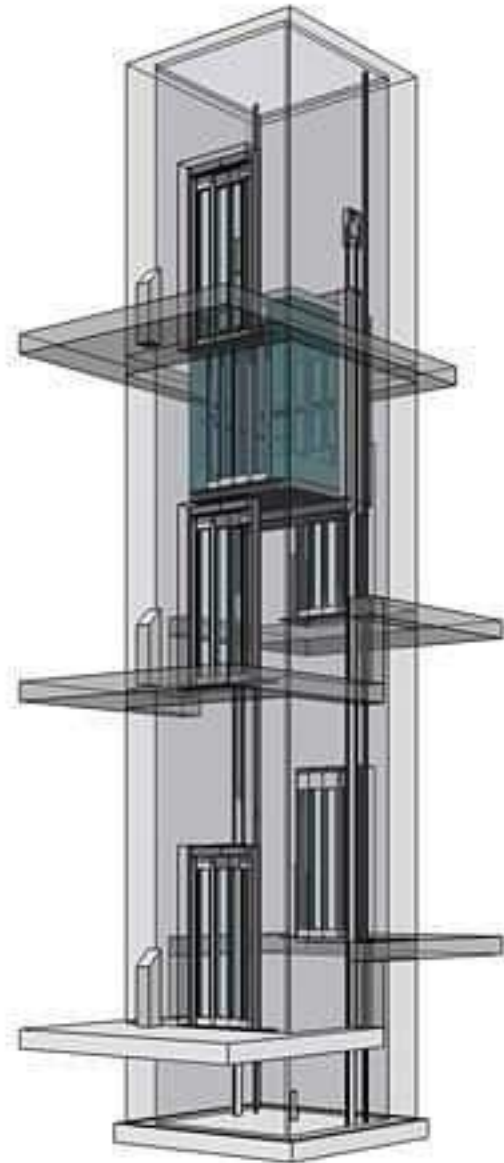


井道立面图  
Shaft Section Plan



ลิฟต์ มีแบบมีห้องเครื่องด้านบน และไม่มีห้องเครื่องด้านบน

<https://www.youtube.com/watch?v=ozgvHsLR7o0>





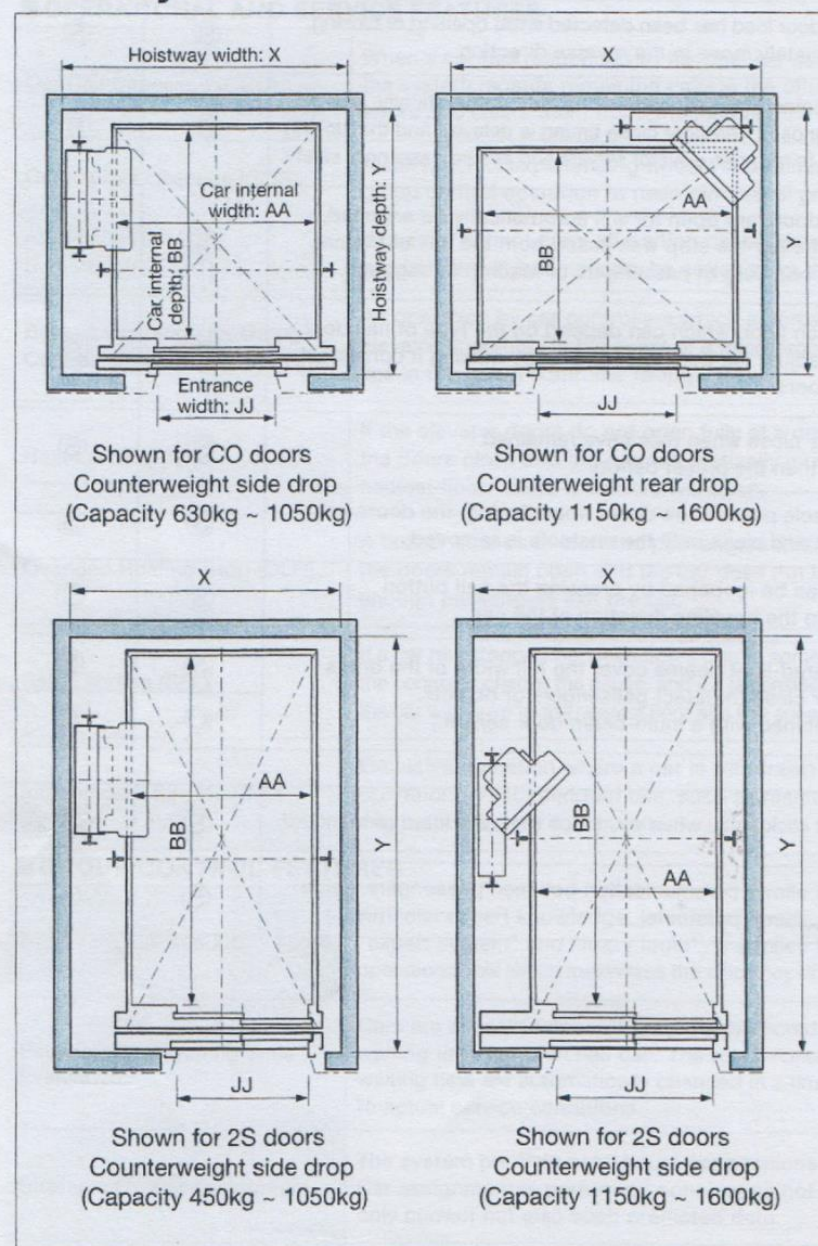
# Rated Load, Speed, Door Type, Car Internal Dimensions & Hoistway Dimensions

Code number	Number of persons <sup>1</sup>	Rated load (kg)	Rated speed (m/sec)	Door type <sup>2</sup>	Car internal dimensions (mm) AAxBB	Entrance width JJ (mm)	Minimum hoistway dimensions (mm) <sup>3</sup>		
							X x Y <sup>4</sup>	PD <sup>6</sup>	OH <sup>6</sup>
P6	6	450	1.0	2S	950x1300	800	1500x1700	1300	3600
P7	7	550	1.0	2S	1100x1300	800	1650x1700	1300	3600
			1.6					1400	3750
			1.75					1450	3850
P8	8	630	1.0	CO	1100x1400	900: Standard 800: Optional	1950x1720 (JJ=900) <sup>5</sup> 1800x1720 (JJ=800) <sup>5</sup>	1300	3600
			1.6					1400	3750
			1.75					1450	3850
			1.0	2S				1300	3600
			1.6					1400	3750
			1.75					1450	3850
P11	11	825	1.0	CO	1350x1400	900: Standard 800: Optional	2025x1720 (JJ=900) <sup>5</sup> 1925x1720 (JJ=800) <sup>5</sup>	1300	3600
			1.6					1400	3750
			1.75					1450	3850
			1.0	2S				1300	3600
			1.6					1400	3750
			1.75					1450	3850
P14 wide type	14	1050	1.0	CO	1600x1400	1100: Standard 900: Optional	2350x1720 (JJ=1100) <sup>5</sup> 2150x1720 (JJ=900) <sup>5</sup>	1300	3600
			1.6					1400	3750
			1.75					1450	3850
			1.0	2S				1300	3600
			1.6					1400	3750
			1.75					1450	3850
P14 deep type	14	1050	1.0	CO	1100x2100	900: Standard 800: Optional	1950x2420 (JJ=900) <sup>5</sup> 1800x2420 (JJ=800) <sup>5</sup>	1300	3600
			1.6					1400	3750
			1.75					1450	3850
			1.0	2S				1300	3600
			1.6					1400	3750
			1.75					1450	3850
P17	17	1275	1.0	CO	2000x1400	1100	2490x1960 <sup>5</sup>	1550	4100
			1.6					1650	4250
			1.75					1700	4350
			1.0	2S				1550	4100
			1.6					1650	4250
			1.75					1700	4350
P21	21	1600	1.0	CO	2100x1600	1100	2590x2160 <sup>5</sup>	1550	4100
			1.6					1650	4250
			1.75					1700	4350
			1.0	2S				1550	4100
			1.6					1650	4250
			1.75					1700	4350

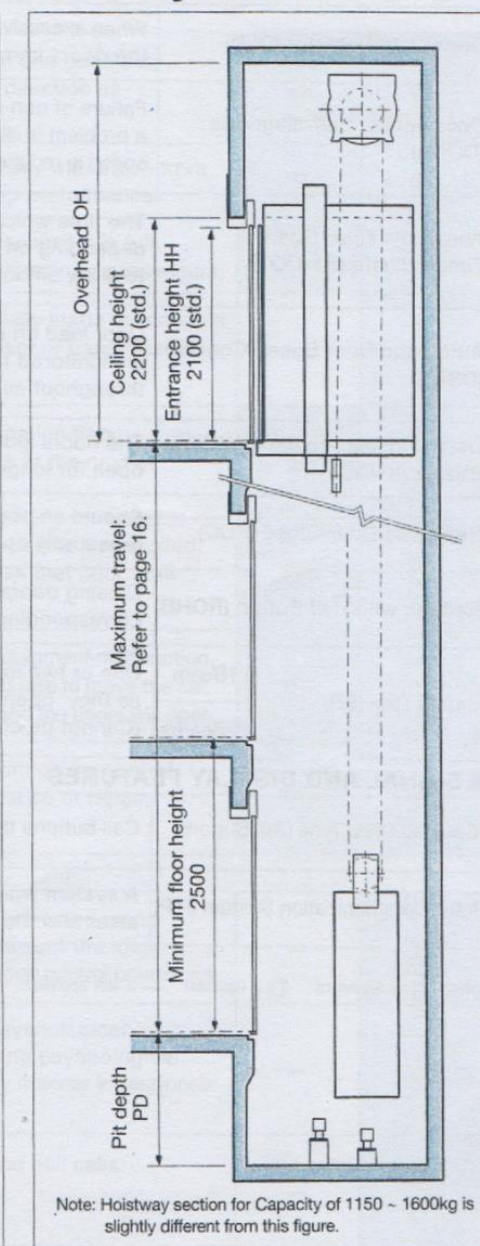
## Specifications

Specifications		1.0 m/sec	1.6 m/sec	1.75 m/sec
Maximum number of stops	450kg	22	—	30
	550kg, 630kg, 825kg, 1050kg			
	1275kg, 1600kg			
Maximum travel (m)	450kg	60	—	80
	550kg, 630kg, 825kg, 1050kg			
	1275kg, 1600kg			
Minimum floor height (mm)		2500 <sup>7</sup>		

## Hoistway Plan



## Hoistway Section





**ICON720**



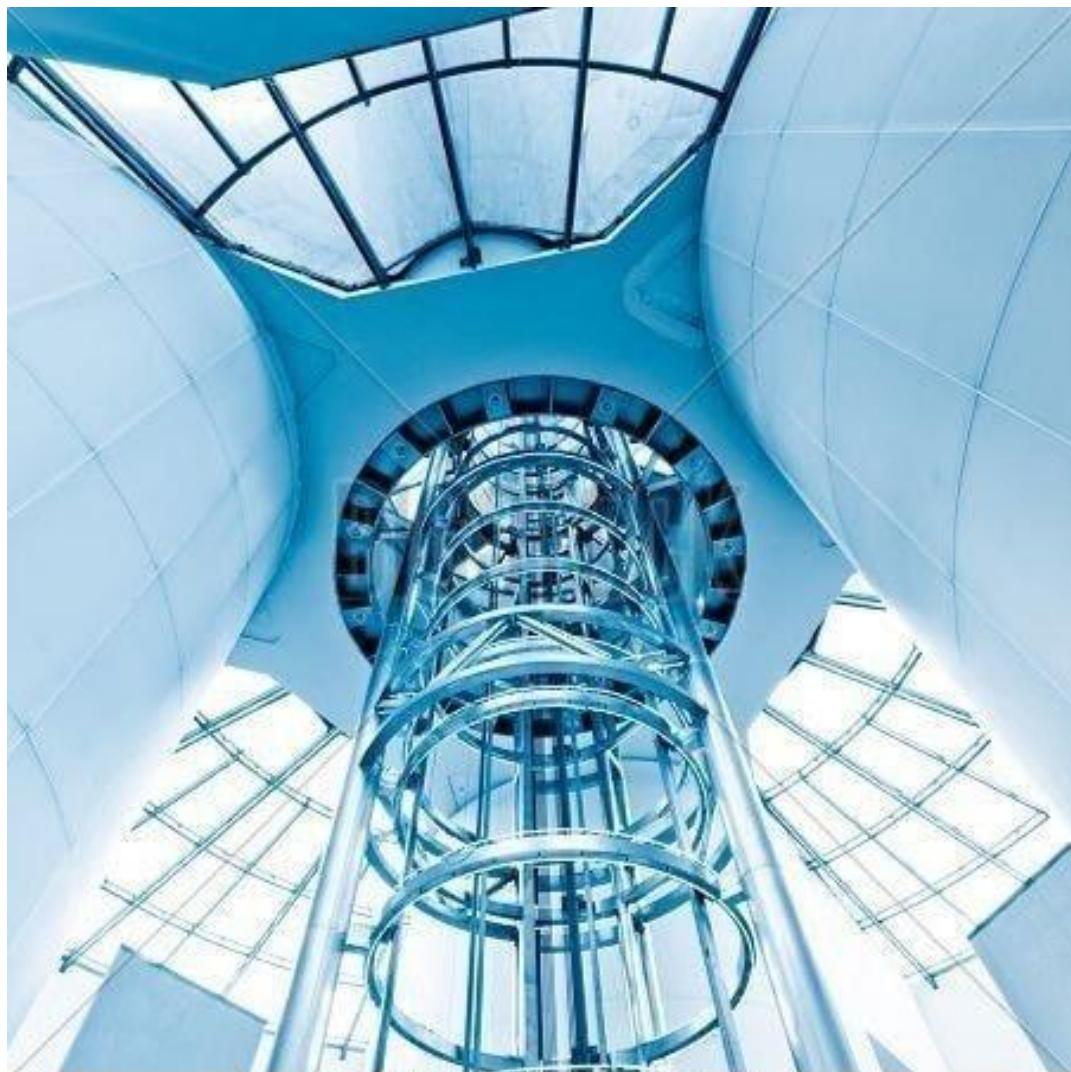
*by grand*





S4B-SD1-17 - (c) - Daniel Sambras / STO



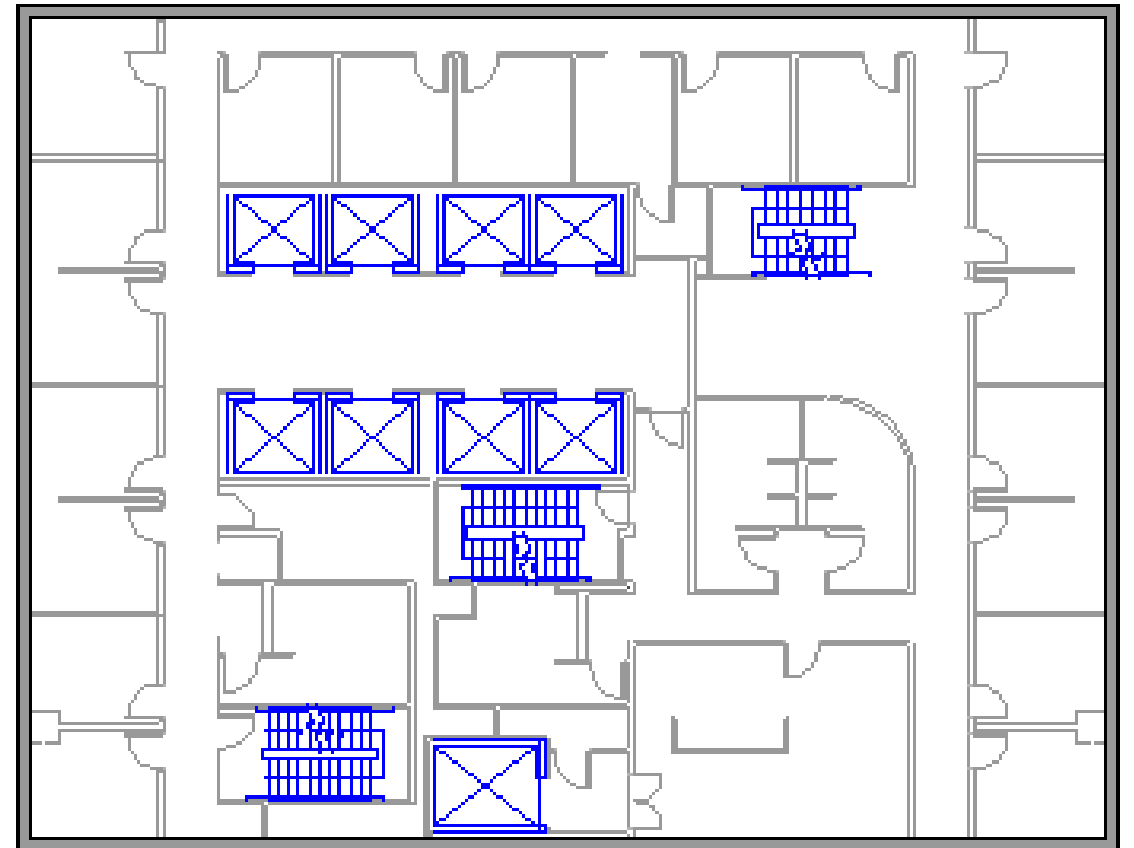
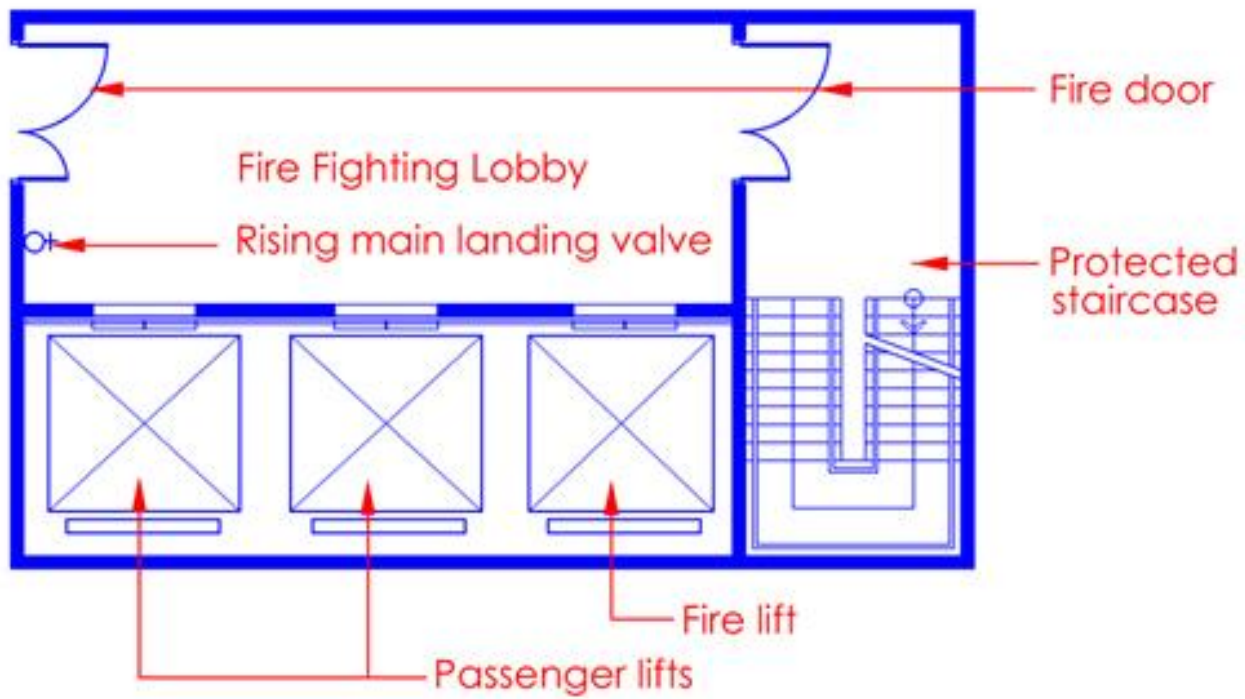


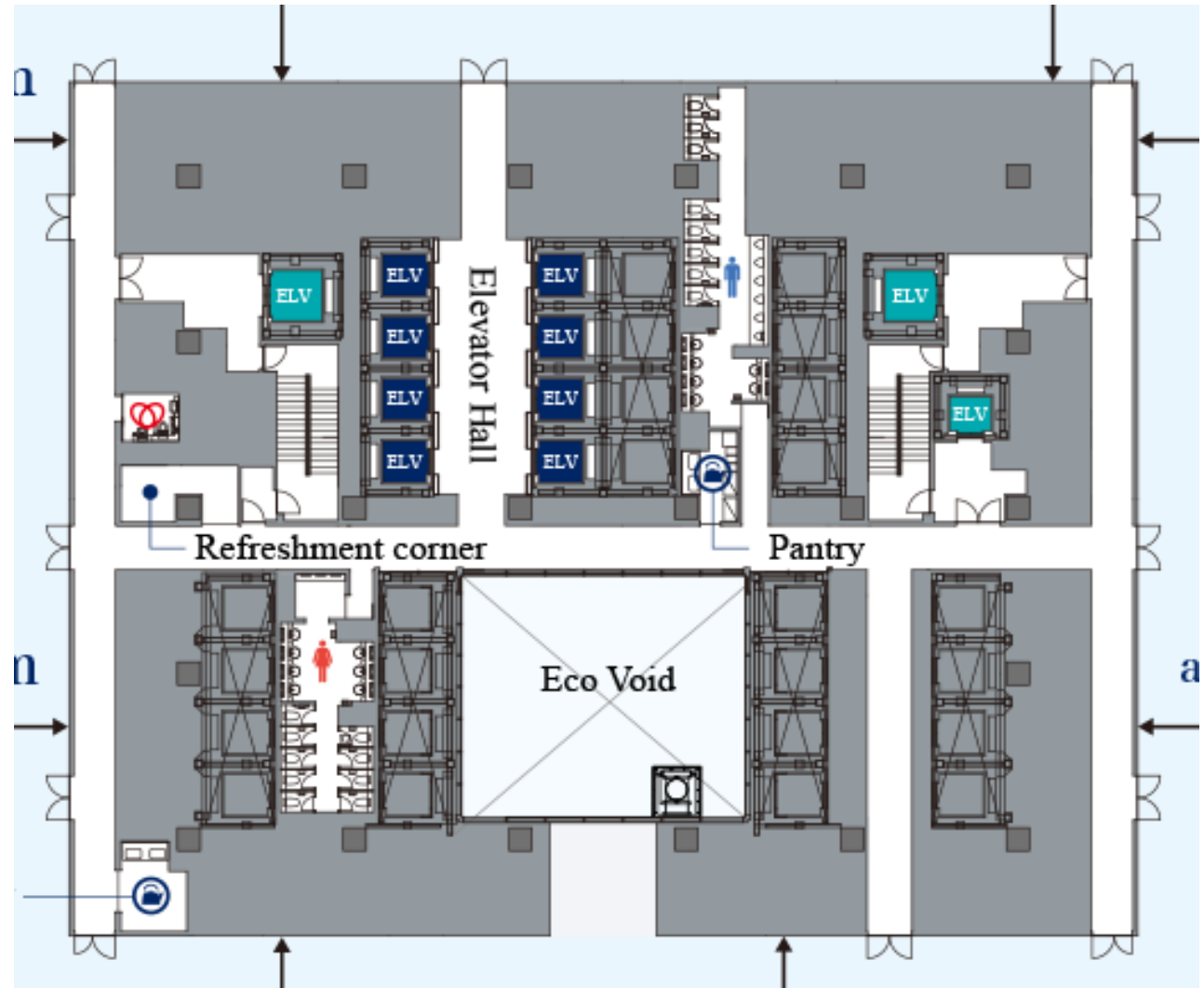
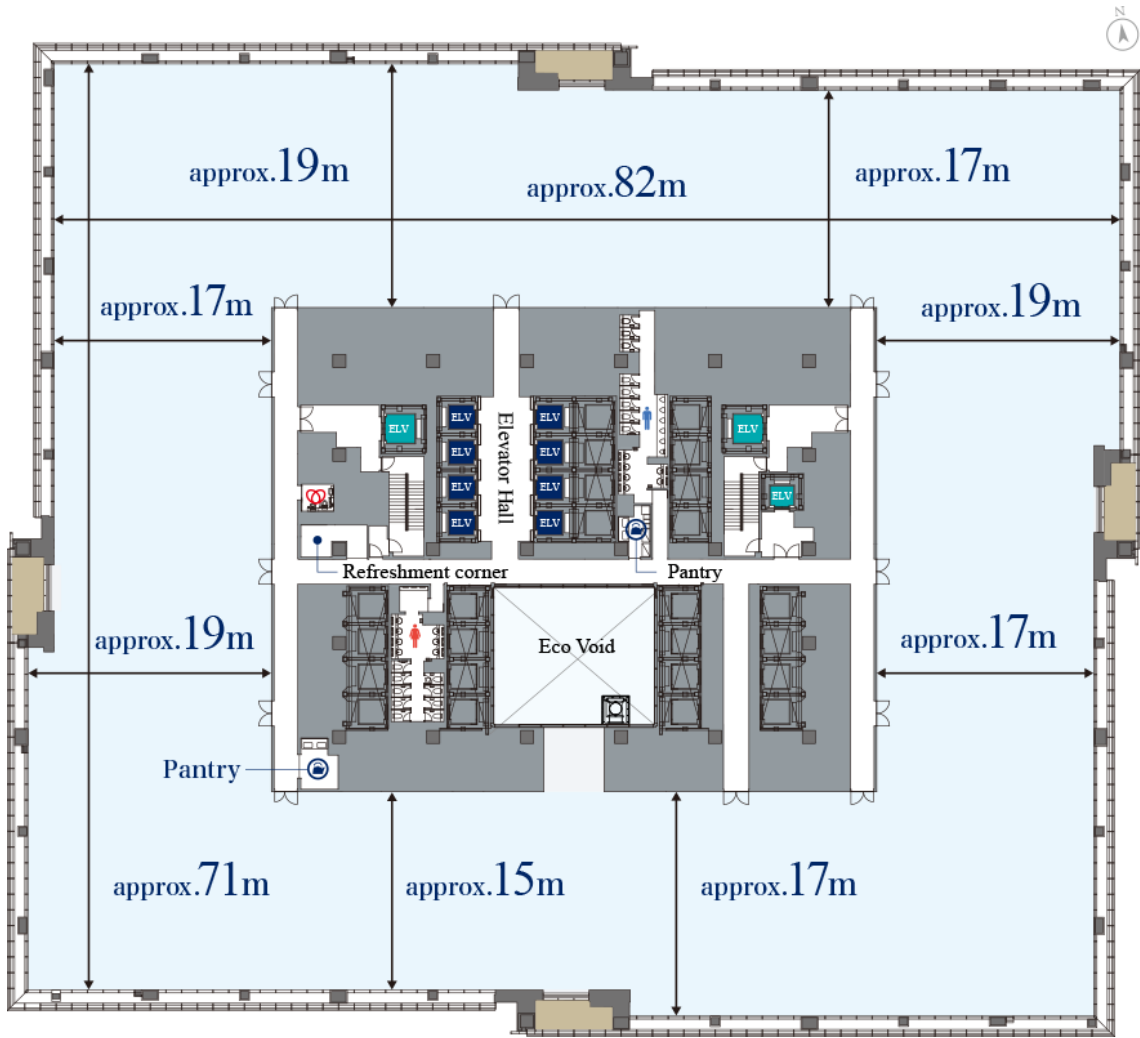
www.bigstock.com · 20271341



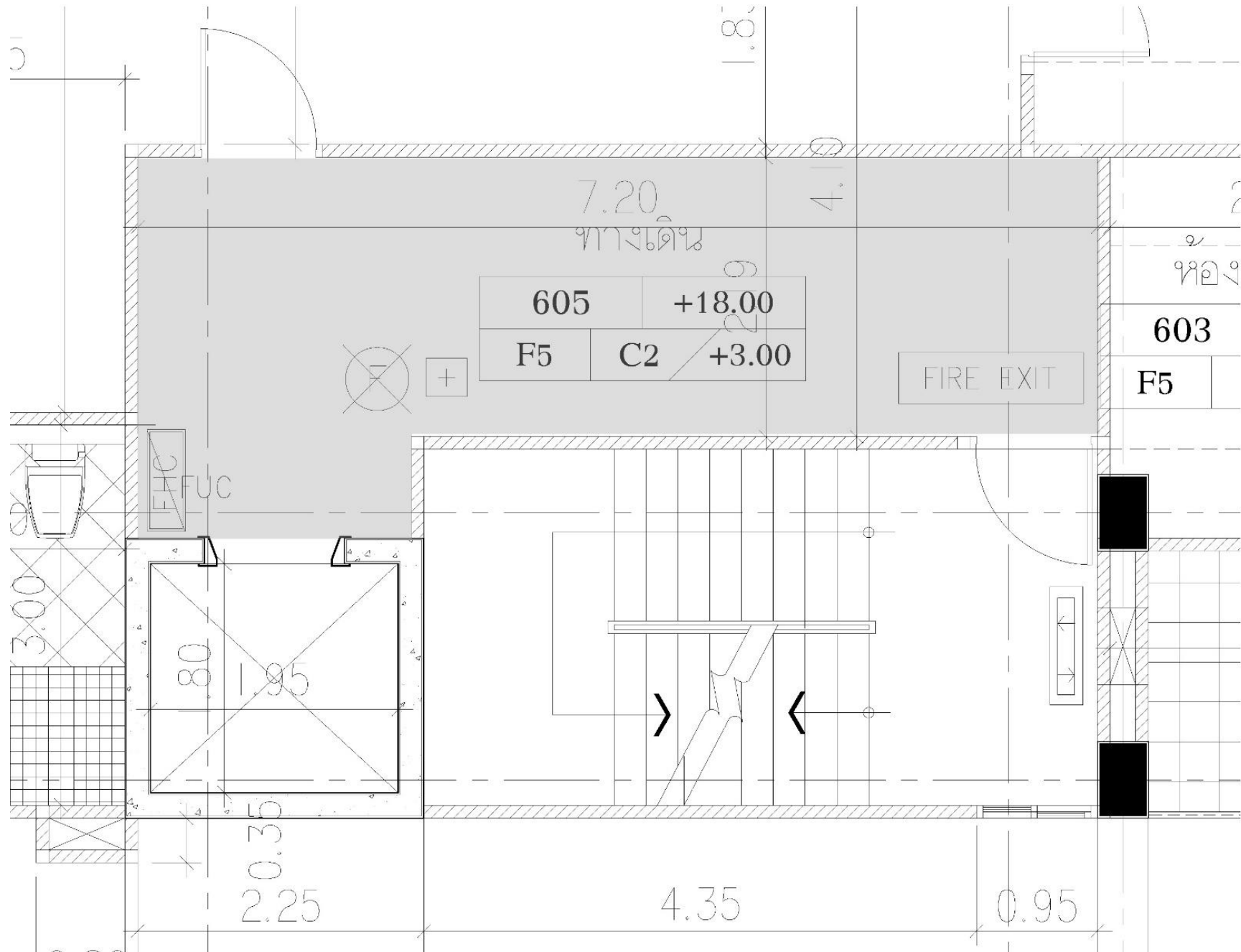


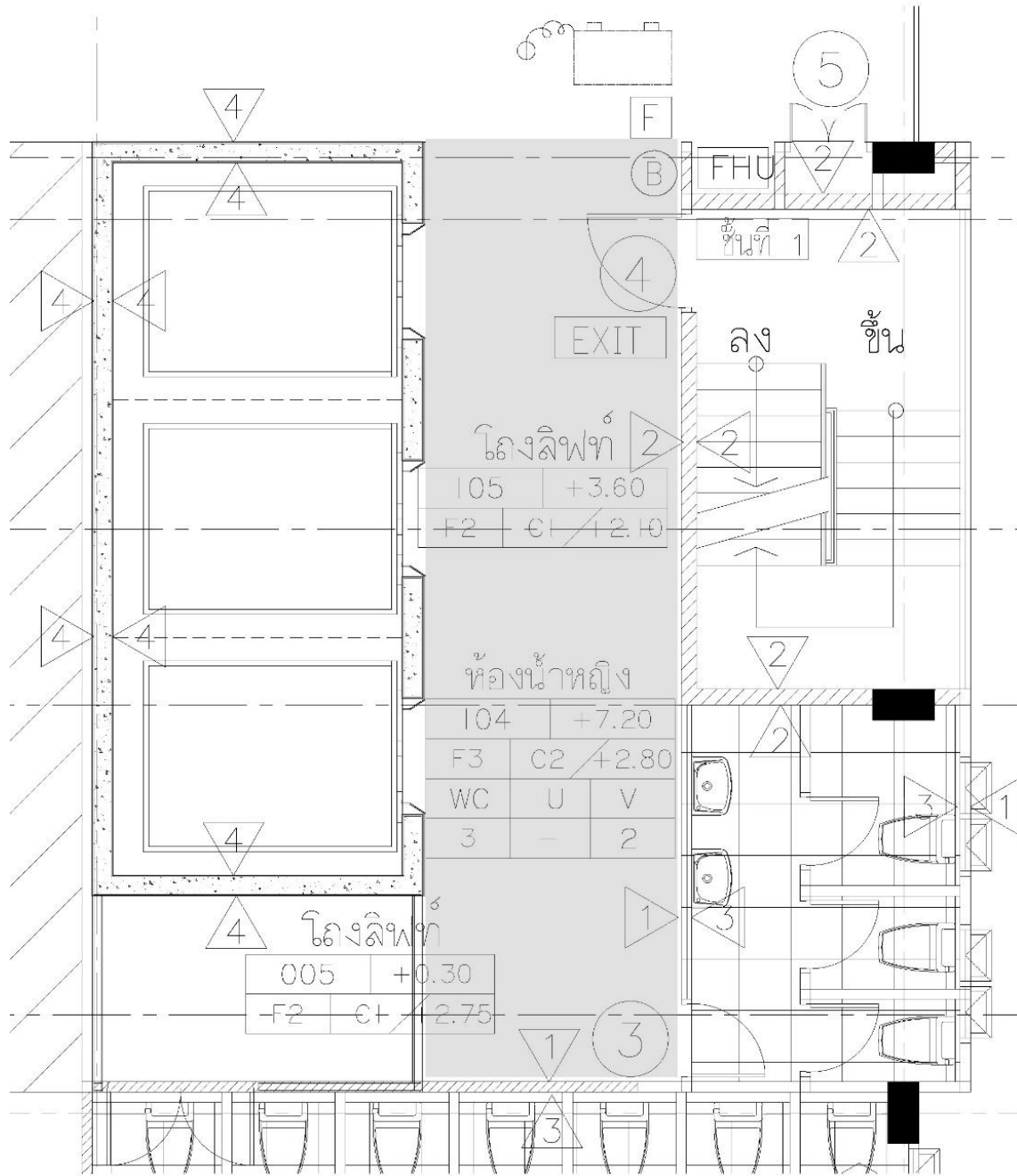
Fire lift in a common lift shaft











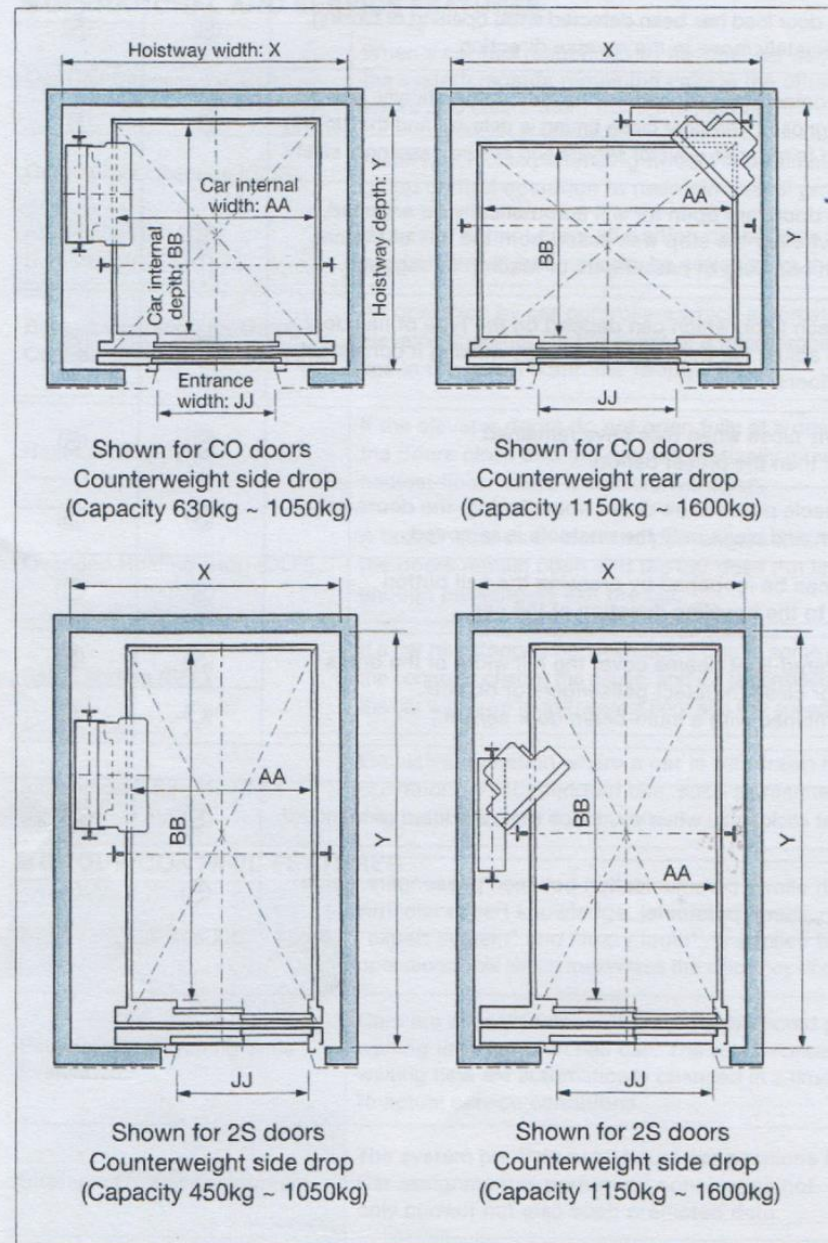
# Rated Load, Speed, Door Type, Car Internal Dimensions & Hoistway Dimensions

Code number	Number of persons <sup>1</sup>	Rated load (kg)	Rated speed (m/sec)	Door type <sup>2</sup>	Car internal dimensions (mm) AAxBB	Entrance width JJ (mm)	Minimum hoistway dimensions (mm) <sup>3</sup>		
							X x Y <sup>4</sup>	PD <sup>6</sup>	OH <sup>6</sup>
P6	6	450	1.0	2S	950x1300	800	1500x1700	1300	3600
P7	7	550	1.0	2S	1100x1300	800	1650x1700	1300	3600
			1.6					1400	3750
			1.75					1450	3850
P8	8	630	1.0	CO	1100x1400	900: Standard 800: Optional	1950x1720 (JJ=900) <sup>5</sup> 1800x1720 (JJ=800) <sup>5</sup>	1300	3600
			1.6					1400	3750
			1.75					1450	3850
			1.0	2S				1300	3600
			1.6					1400	3750
			1.75					1450	3850
P11	11	825	1.0	CO	1350x1400	900: Standard 800: Optional	2025x1720 (JJ=900) <sup>5</sup> 1925x1720 (JJ=800) <sup>5</sup>	1300	3600
			1.6					1400	3750
			1.75					1450	3850
			1.0	2S				1300	3600
			1.6					1400	3750
			1.75					1450	3850
P14 wide type	14	1050	1.0	CO	1600x1400	1100: Standard 900: Optional	2350x1720 (JJ=1100) <sup>5</sup> 2150x1720 (JJ=900) <sup>5</sup>	1300	3600
			1.6					1400	3750
			1.75					1450	3850
			1.0	2S				1300	3600
			1.6					1400	3750
			1.75					1450	3850
P14 deep type	14	1050	1.0	CO	1100x2100	900: Standard 800: Optional	1950x2420 (JJ=900) <sup>5</sup> 1800x2420 (JJ=800) <sup>5</sup>	1300	3600
			1.6					1400	3750
			1.75					1450	3850
			1.0	2S				1300	3600
			1.6					1400	3750
			1.75					1450	3850
P17	17	1275	1.0	CO	2000x1400	1100	2490x1960 <sup>5</sup>	1550	4100
			1.6					1650	4250
			1.75					1700	4350
			1.0	2S				1550	4100
			1.6					1650	4250
			1.75					1700	4350
P21	21	1600	1.0	CO	2100x1600	1100	2590x2160 <sup>5</sup>	1550	4100
			1.6					1650	4250
			1.75					1700	4350
			1.0	2S				1550	4100
			1.6					1650	4250
			1.75					1700	4350

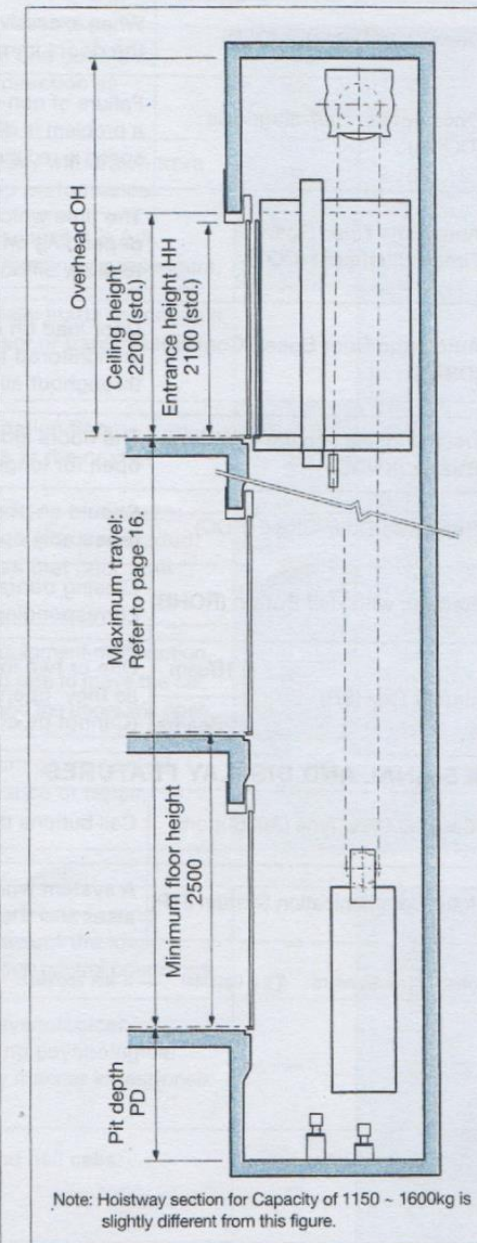
## Specifications

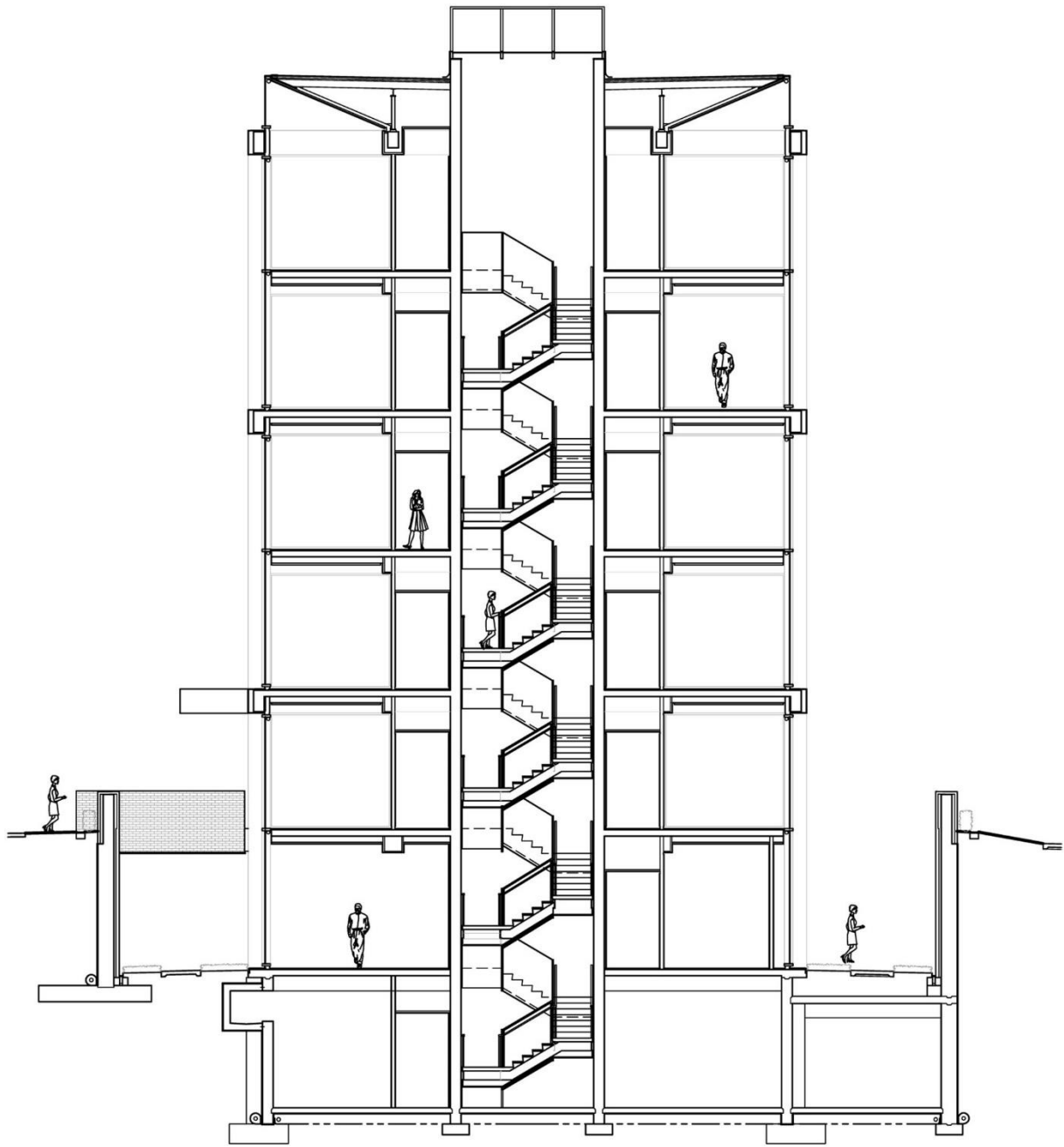
Specifications		1.0 m/sec	1.6 m/sec	1.75 m/sec
Maximum number of stops	450kg	22	—	30
	550kg, 630kg, 825kg, 1050kg			
	1275kg, 1600kg			
Maximum travel (m)	450kg	60	—	80
	550kg, 630kg, 825kg, 1050kg			
	1275kg, 1600kg			
Minimum floor height (mm)		2500 <sup>7</sup>		

## Hoistway Plan

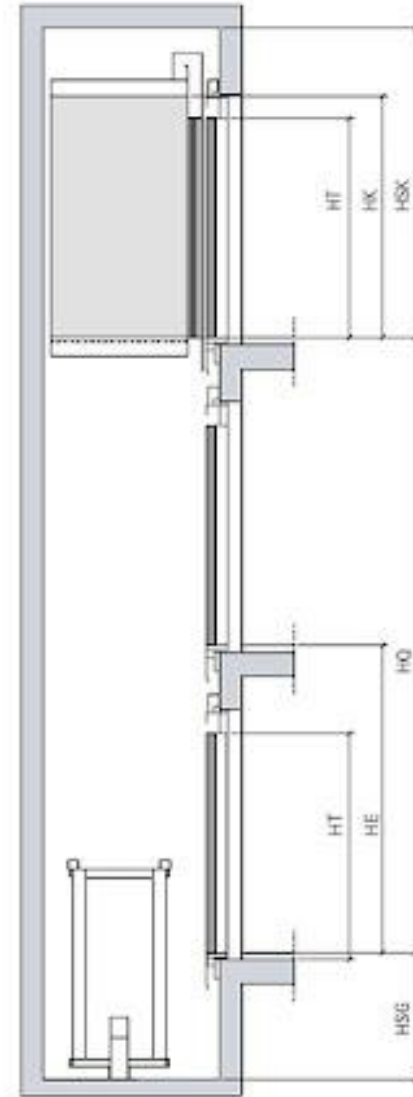


## Hoistway Section

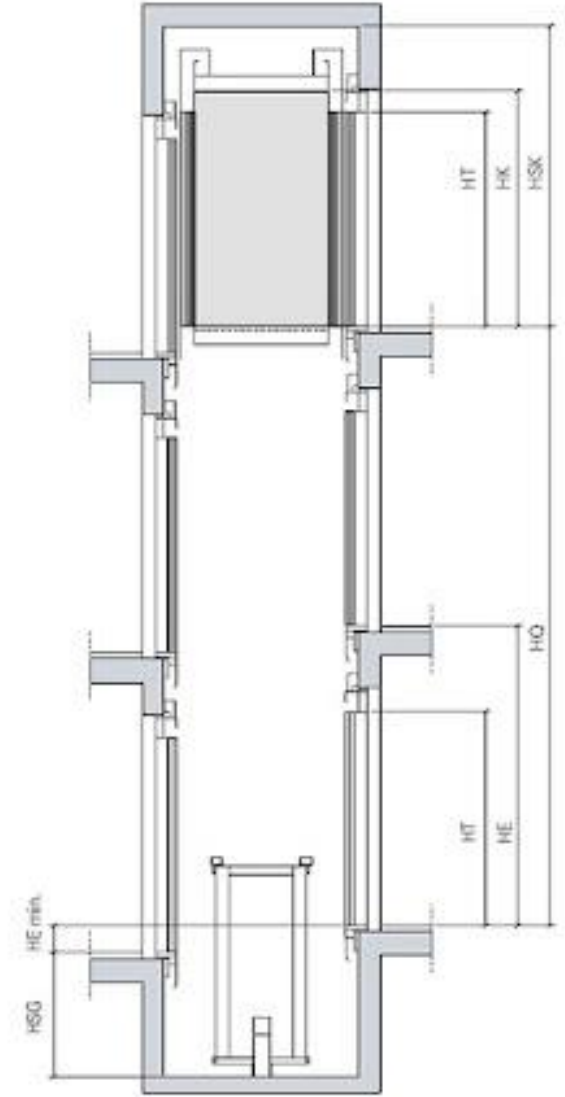




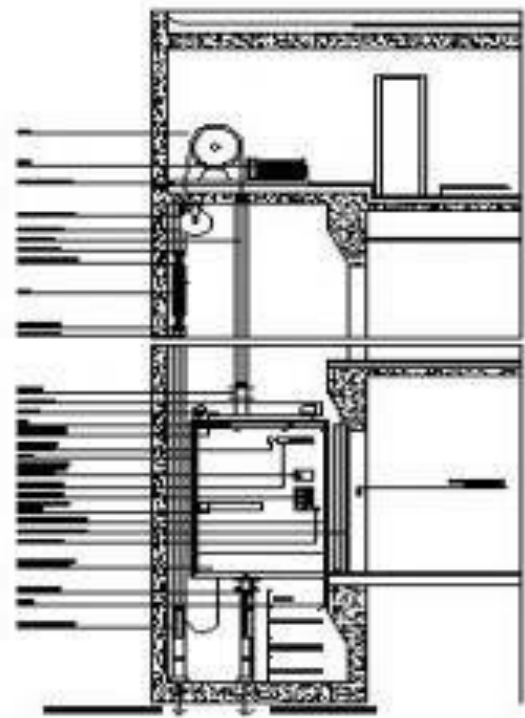
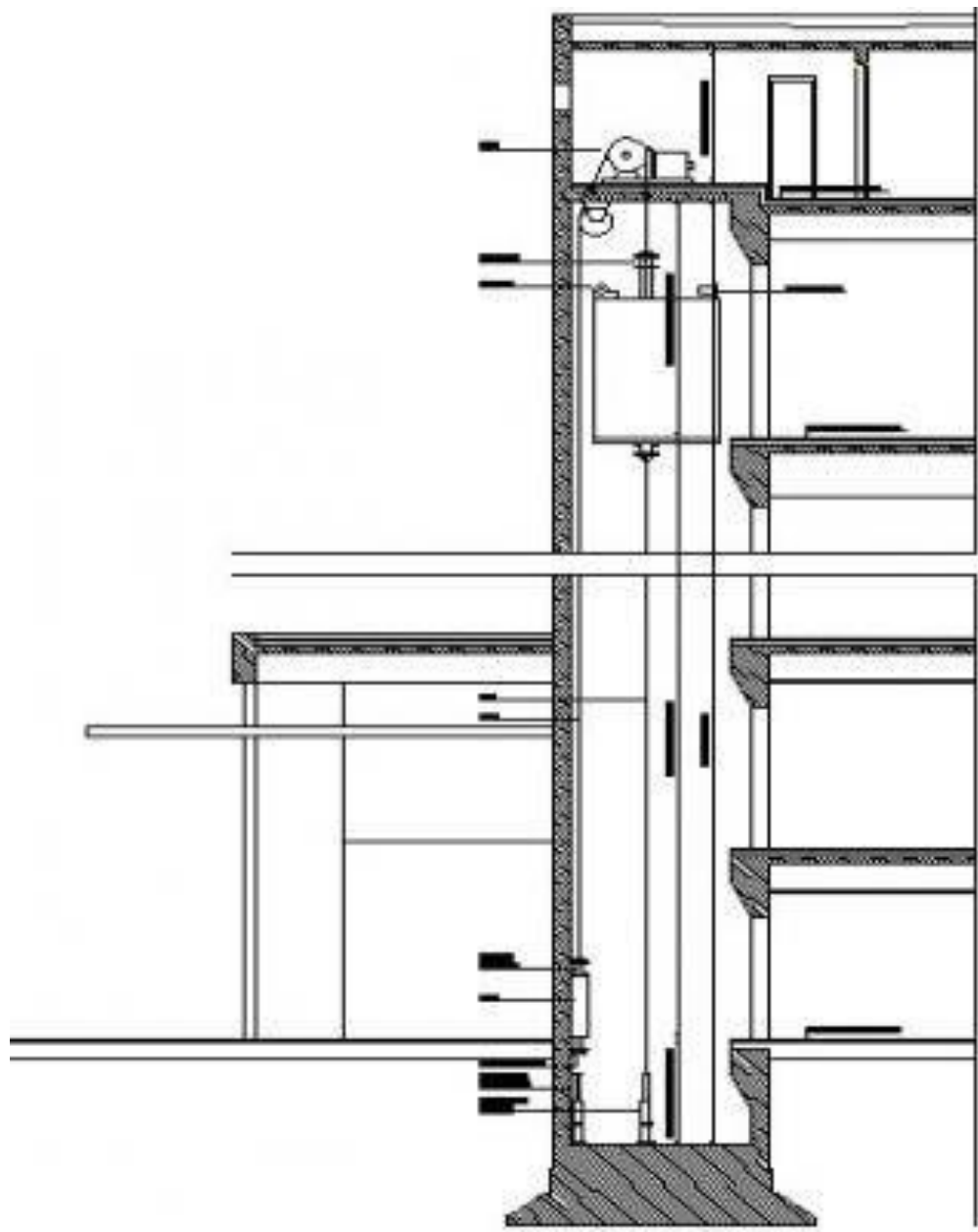
## Height and layout

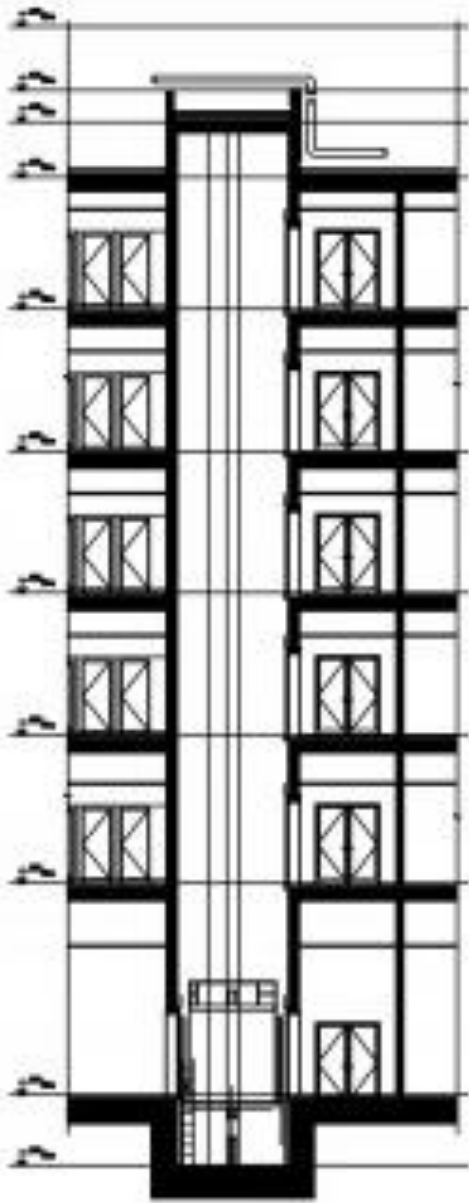


One-sided entrance

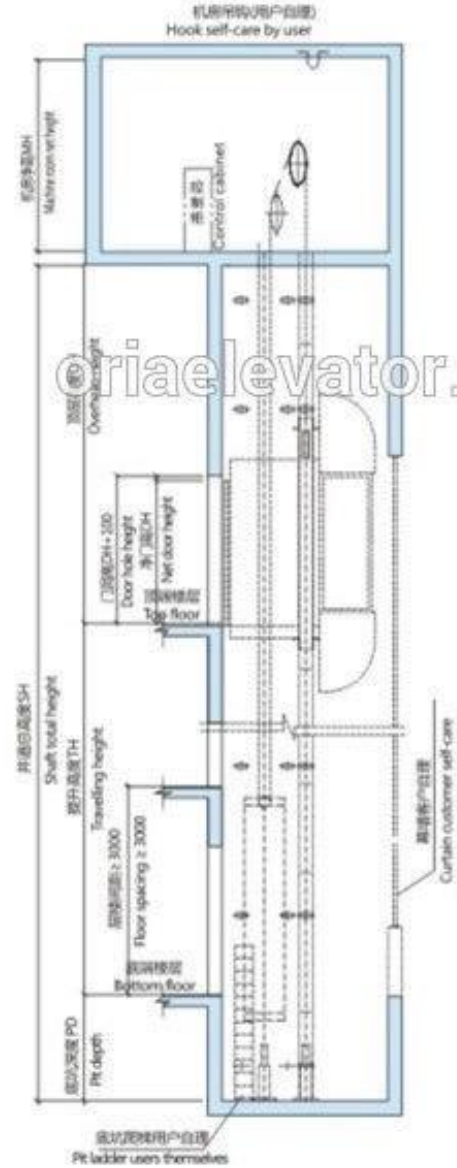


Two-sided entrance

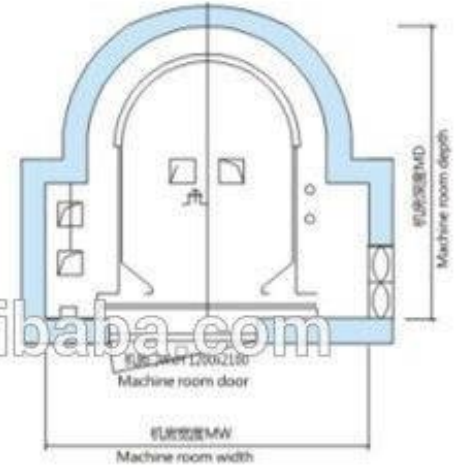




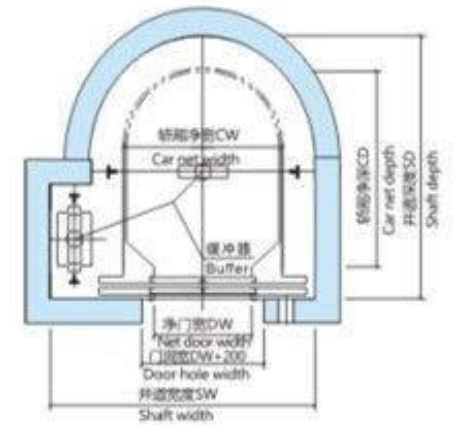
井道立面图  
Shaft elevation



机房平面布置图  
Machine room layout plan



井道平面布置图  
Shaft layout plan



# ที่มาของข้อมูล

<http://www.elevatordesigner.com/service.php>

<https://en.wikipedia.org/wiki/Elevator>